

saMBO-ICT



QlikView koppelingen

Wiegert Heres

4 juni 2015

- Integratiemogelijkheden
  - Opendoc
  - Single object
  - iframe
  - DIV tag (workbench)
- Waar moet je rekening mee houden?
- Vragen

# Simple Integration

## Opendoc.htm (Accesspoint)

<http://eu-a.demo.qlik.com/QvAJAXZfc/opendoc.htm?document=qvdocs/Prescription%20Tracker.qvw>

## Singleobject.htm

<http://eu-a.demo.qlik.com/QvAJAXZfc/singleobject.htm?document=qvdocs/Prescription%20Tracker.qvw&object=CH256&select=LB104,Albany>

## AJAX URL parameters

<https://community.qlik.com/blogs/qlikviewdesignblog/2014/07/11/ajax-and-url-parameters>

## Iframe

```
<iframe  
src=http://localhost/QvAJAXZfc/opendoc.htm?docume  
nt=Marktaandeel%20MBO.qvw&host=Local&sheet=SH07>  
</iframe>
```

- Integratie van QlikView objecten op een website
- Interactie tussen de verschillende objecten
- Maakt gebruik van Ajax Javascript library

# Voorbeeld in SharePoint

QlikView - DevHome

mbj-sp2013/sites/QlikView/SitePages/DevHome.aspx

SharePoint

Newsfeed SkyDrive Sites Martijn Biesbroek

BROWSE PAGE

QlikView EDIT LINKS

Home

Documents

Apps in Testing

Samples

Developer Center

Site Contents

EDIT LINKS

Clear

Current Selections

Year 13 of 95

Director Agnès Varda, Akira Kurosawa, Alain Resnais, Alan Arkin, Alan J. Levi, Alan Alda

You are 0#.wjqtsetlmbj

### Number of Movies over time

Year	Number of Movies
1960	4
1961	2
1962	1
1963	2
1964	4
1965	1
1966	3
1967	2
1968	1
1969	0
1970	1
1971	0
1972	0
1973	0
1974	0
1975	2
1976	0
1977	0
1978	1
1979	0
1980	2

### Number of Movies

Actor

Actor	Number of Movies
Takashi Shimura	12
Kamatari Fujiwara	9
Toshiro Mifune	8
Toshirō Mifune	8
Yoshio Tsuchiya	8
Yutaka Sada	7
Tatsuya Nakadai	7
Ikio Sawamura	6

### Ratio to Total

Length

Length	Ratio
1 to 1.5hrs	10.3%
1.5 to 2hrs	37.9%
2 to 2.5hrs	37.9%
3hrs+	13.8%

### Director: 5

Director	Count
Agnès Varda	2
Akira Kurosawa	20
Alain Resnais	3
Alan Arkin	1
Alan J. Levi	2
Alan J. Pakula	2
Alex Segal	1
Alfred Hitchcock	7
Allan Dwan	1
Anatole Litvak	1
Andrei Tarkovsky	1
Andrew Marton	1
Andrew V. McLaglen	4
Anthony Asquith	2
Anthony Mann	2

# Voorbeeld "code" om QlikView objecten te embedden

```
<script type="text/javascript">
  /* View identifies the Document, Host identifies the QlikView Server as seen in QMC */
  Qv.InitWorkBench({ View: 'Movies Database', Host: 'QVS@nlhoo-mbj3' });
</script>
```

```
</head>
<body>
```

```
<div style="position: absolute; width:500px;height:500px;">
```

```
<div class="QvFrame"
style="top:64px;left:32px; "
avqview="Movies Database"
avq="object:.Document\CH07" >
</div>
```

```
<div class="QvFrame"
style="top:64px;left:732px;"
avqview="Movies Database"
avq="object:.Document\CH01" >
</div>
```

```
</div>
```

```
<div style="width:100px;height:50px;">
```

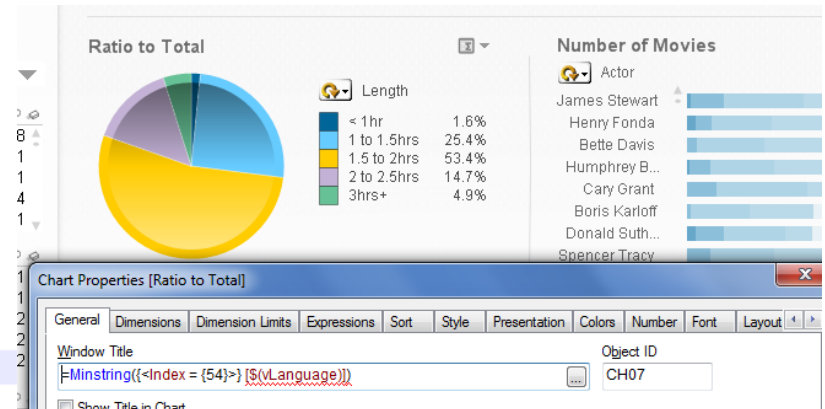
```
<div class="QvFrame"
style="top:664px;left:32px; "
avqview="Movies Database"
avq="object:.Document\BU08" >
</div>
```

```
</div>
```

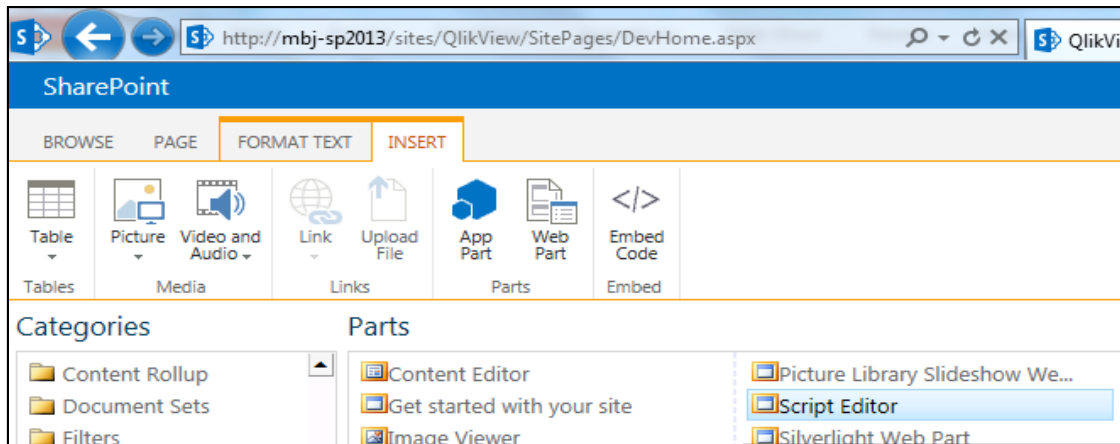


A block like this for each Visualisation Object.

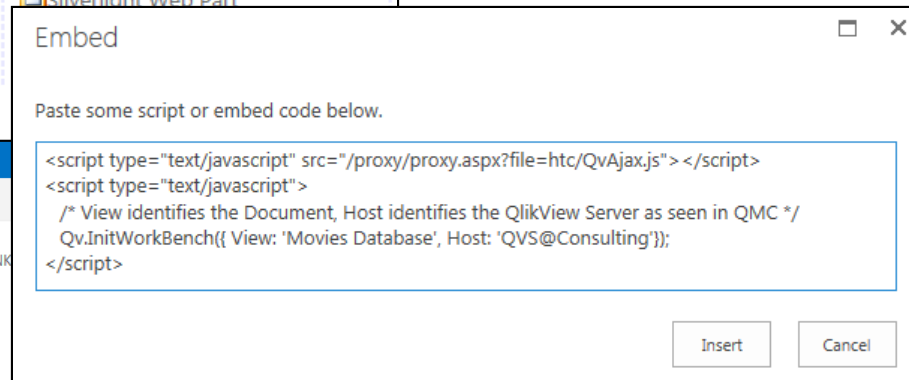
Determine the **AVQ ID** from the General properties of the Object using QlikView Desktop.



# SharePoint 2013 Script editor webpart with DIV tags



- Add Script Editor webpart for Connection `Qv.InitWorkbench()`
- Add more Script Editor webparts for each Visualisation Object `<DIV ... </DIV>`



The screenshot shows the QlikView application interface. The main area displays a bar chart titled 'Number of Movies over time' with a y-axis from 0 to 20 and an x-axis from 1940 to 2000. To the right, there is a list of actors with their corresponding number of movies:

Actor	Number of Movies
Henry Fonda	93
Bette Davis	88
Humphrey Bogart	87

Below the chart, there is a 'Current Selections' section with 'Actor' selected, showing a list of actors: Bette Davis, Henry Fonda, Humphrey Bogart.



**DEMO**

## Waar moet je rekening mee houden?

- Kennis van HTML / CSS / JavaScript
- QlikView licentie → Workbench=YES